

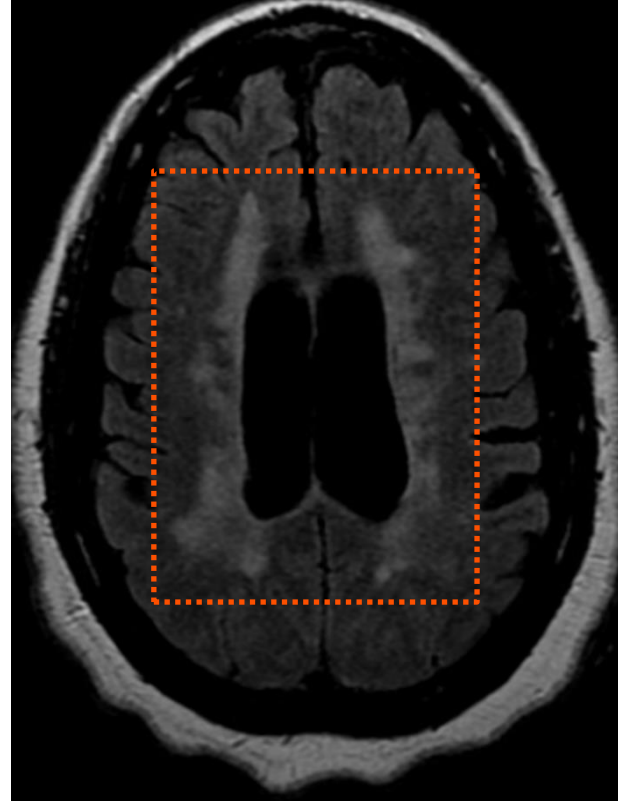
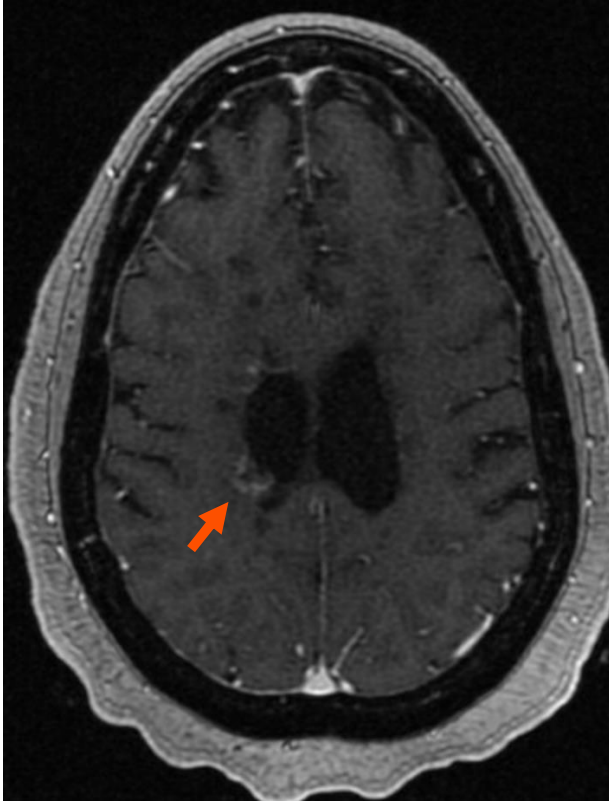
Integrating practice to enhance care of patients with multiple sclerosis



Disclaimer

- *Unapproved products or unapproved uses of approved products may be discussed by the faculty; these situations may reflect the approval status in one or more jurisdictions*
- *The presenting faculty have been advised by USF Health and touchIME to ensure that they disclose any such references made to unlabelled or unapproved use*
- *No endorsement by USF Health or touchIME of any unapproved products or unapproved uses is either made or implied by mention of these products or uses in USF Health or touchIME activities*
- *USF Health and touchIME accept no responsibility for errors or omissions*

Acute and chronic MS brain lesions and atrophy



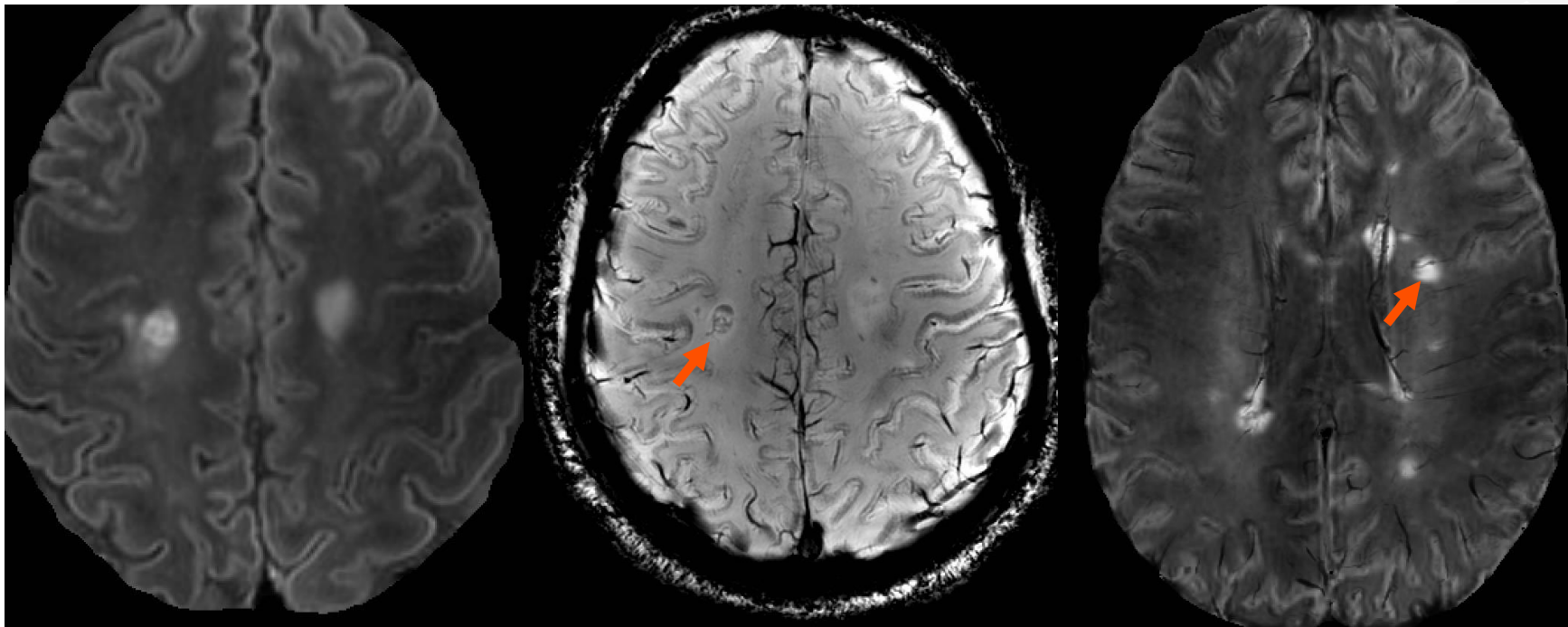
MS, multiple sclerosis.

Acute and chronic MS spine lesions



MS, multiple sclerosis.

Emerging MRI biometrics: Paramagnetic rim lesions and central vein sign (PRL and CVS)



CVS, central vein sign; MRI, magnetic resonance imaging; PRL, paramagnetic rim lesions.